

# MONTHLY MEMBERSHIP PROGRESS REPORT

District 27 D1

Results as of: 3/31/2026

GMT:

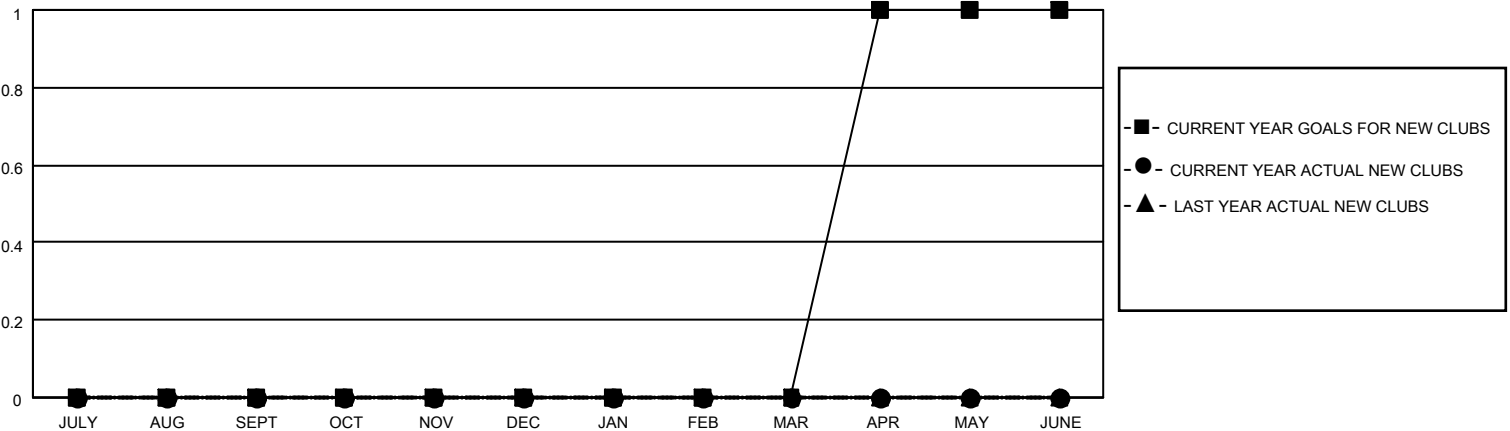
LOCATION WISCONSIN

GMT CA

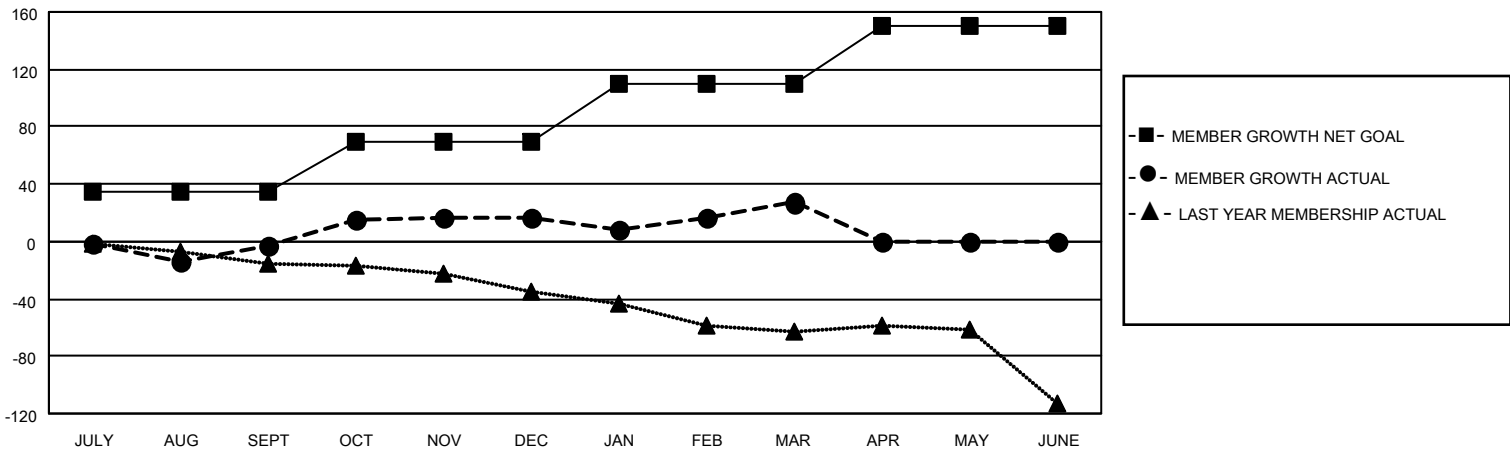
Clubs			
RESULTS FOR 2025-2026			
QUARTER	NEW CLUB GOAL	NEW CLUBS	DROPPED CLUBS
JULY/AUG/SEPT	0	0	0
OCT/NOV/DEC	0	0	0
JAN/FEB/MAR	0	0	0
APR/MAY/JUNE	1	0	0

Members			
RESULTS FOR 2025-2026			
QUARTER	MEMBER GROWTH NET GOAL	MEMBER GROWTH ACTUAL	DROPPED MEMBERS ACTUAL (including transfers)
JULY/AUG/SEPT	35	70	48
OCT/NOV/DEC	35	49	26
JAN/FEB/MAR	40	56	46
APR/MAY/JUNE	40	0	0

GOALS AND ACTUAL NEW CLUBS CUMULATIVE



GOALS AND ACTUAL MEMBERS CUMULATIVE



DROPPED CLUBS: 0	42 CLUBS OF 57 ADDED 1 OR MORE NEW MEMBERS	<b>GENDER DISTRIBUTION</b> MALE 1,354 (66.05%) FEMALE 696 (33.95%)
<b>DROPPED MEMBERS</b> DECEASED 24 CLUB CANCELLED 0 OTHER 96 TOTAL 120	<a href="#">CLICK HERE FOR CUMULATIVE MEMBERSHIP DATA</a>	TOTAL FAMILY UNIT MEMBERS 479 FAMILY MEMBERS PAYING HALF DUES 243